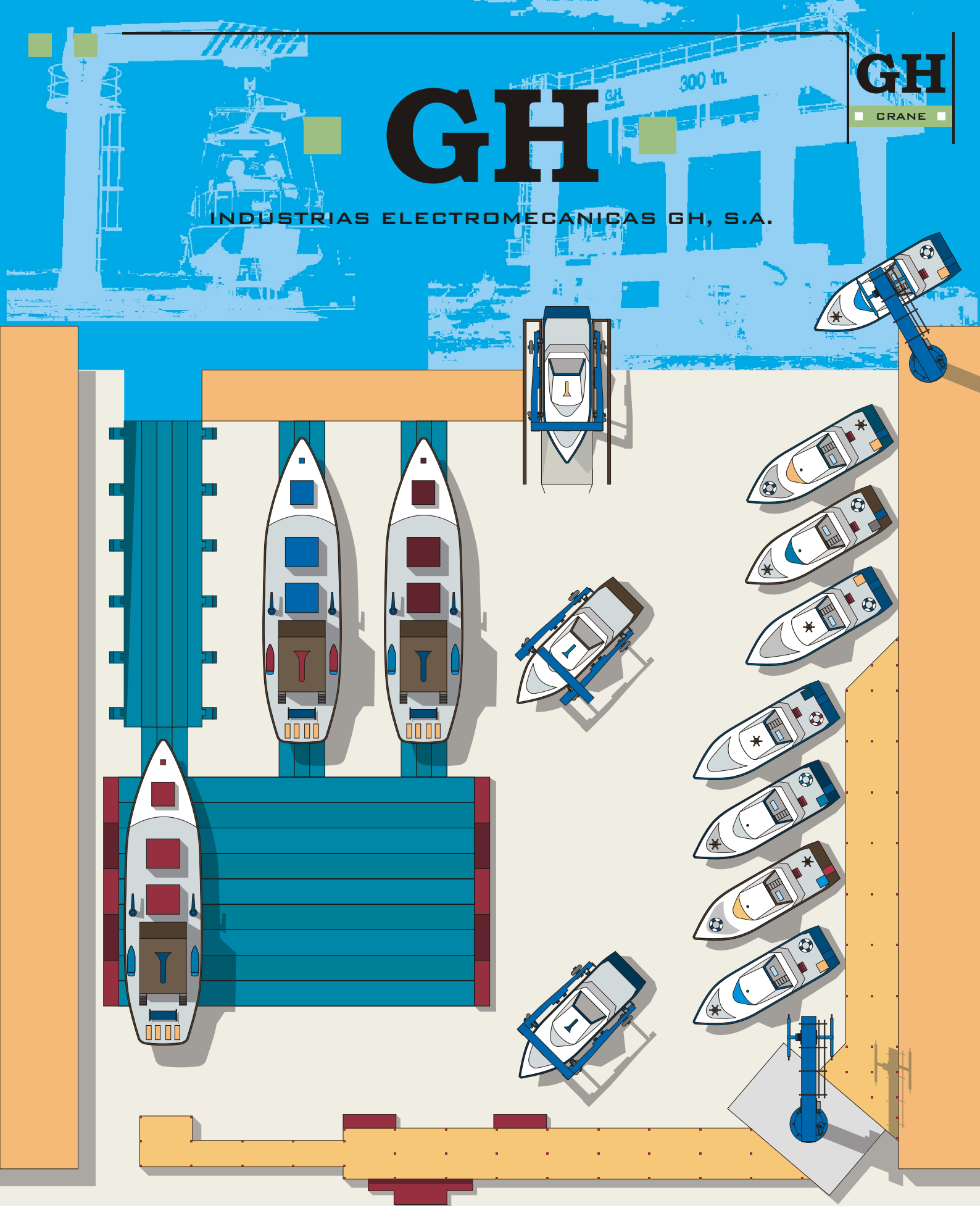


GH

INDUSTRIAS ELECTROMECANICAS GH, S.A.

GH

CRANE



SYSTEMS FOR MANOEUVRING MARINE VESSELS



COVERED AND OWNED FACILITIES

GH began their activities in 1956 and are dedicated to the manufacture of components for maintenance, lifting and storage. Since then they have installed their products in over 37 countries, with more than 60,000 manufactured units, out of which approx. 10% are supplied to the Marine Sector.

The experience gained over these years, the recognition of our customers and the high quality of our products, has established GH as one of the principal European manufacturers in the lifting industry.

The growing demands and requirements of the market, has meant that we have acquired a character of continuous improvement. This has allowed us to maintain the confidence and satisfaction of our clients, and motivates all of us at GH, to constantly seek the development and improvement in our own organisation.

*Central headquarters, R & D and equipment assembly.
(Beasain)*



Achieving this GH applies the most modern design technologies and the most sophisticated production methods. Developing our activity in more than 30.000 m² covered area, distributed in our four factories of Beasain, Olaberria, Bakaikoa and Alsasua.

The wide range of cranes that GH can offer to you, have been designed taking into account the principles of reliability, safety, durability, price and a minimal maintenance. Our prime objective is to achieve and maintain the complete satisfaction of our clients.

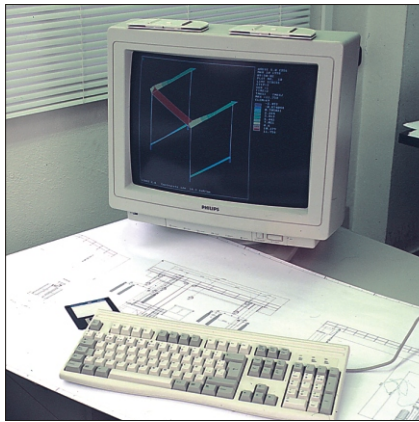


*Heavy and light fabrication facility.
(Bakaikoa)*

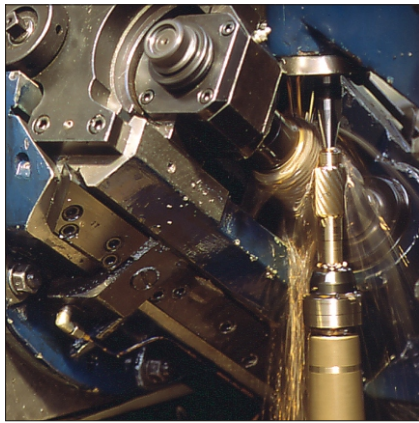


*Machining facility.
(Alsasua)*

SYSTEMS FOR MARINE LIFTING



*Marine
Rotary Jib
Cranes*



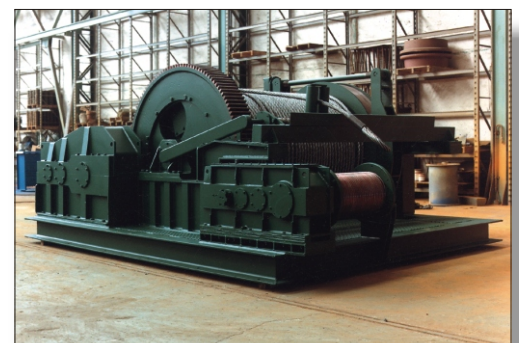
*Automotive
Pneumatic
Gantries*



*Synchronised
Platform
Elevators
for Boat*



*Fixed Dock
Winches*



AUTOMOTIVE GANTRIES

STANDARD



GH-25



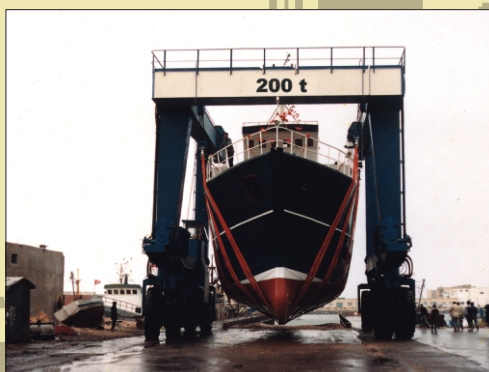
GH-35



GH-70



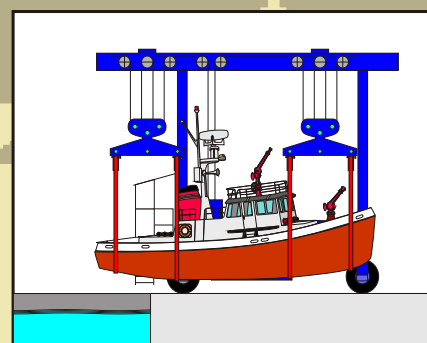
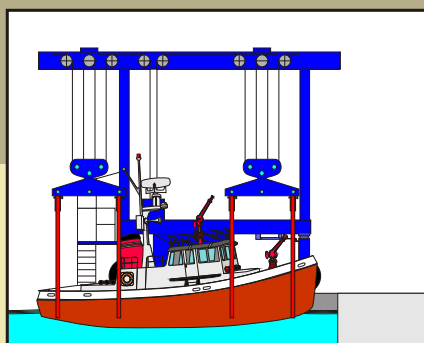
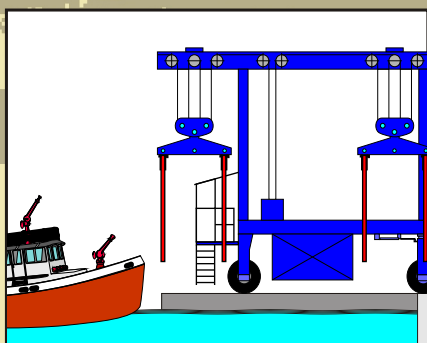
GH-110



GH-220



GH-275



AUTOMOTIVE GANTRIES

SUBMERSIBLE



GH-50



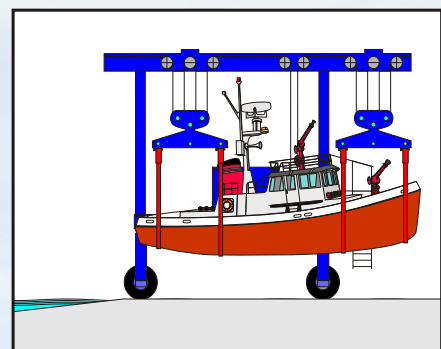
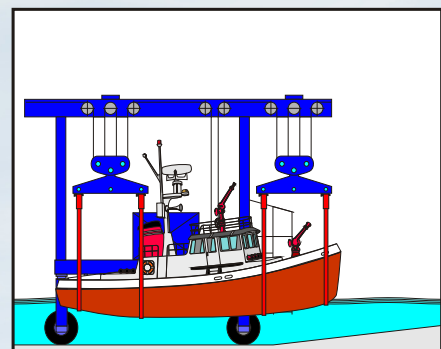
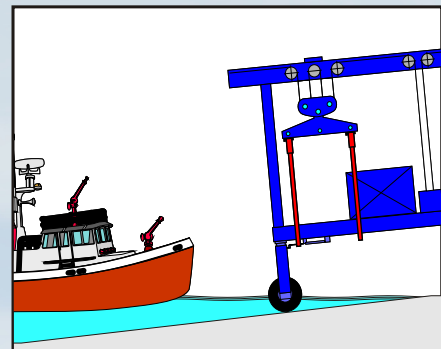
GH-165



GH-330

At GH we have a wide variety of automotive gantries, that range from 20 until 300 Tn. They are all characterized by their great hardness, simplicity of use, easy maintenance and manoeuvrability.

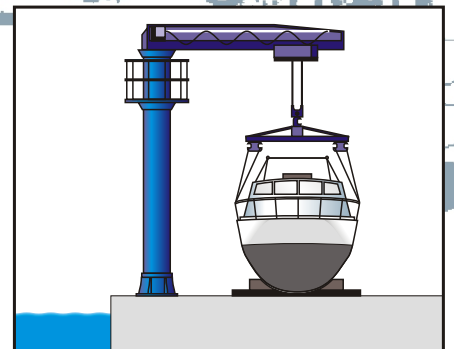
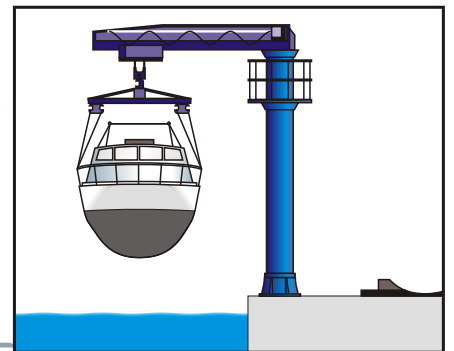
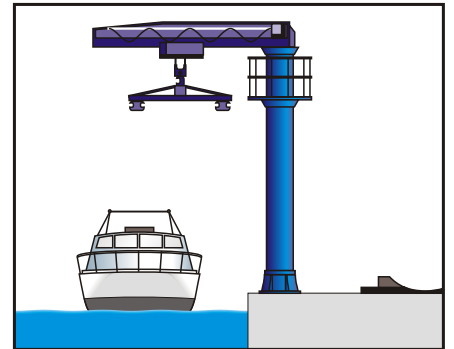
Whatever the required capacity of the gantry, all the system components are arranged in perfect harmony, guaranteeing that any design of vessel can be catered for and lifted with the usual high quality and reliability of GH equipment.



MARINE ROTARY JIB CRANES



The standardisation of our mechanisms into a simple and modular construction, allows us to create a wide and assorted range of rotary jib cranes types, from 4 to 20 Tn. with a max. jib extension of 7m. A common characteristic with all our cranes is their simplicity of use and easy manoeuvrability.

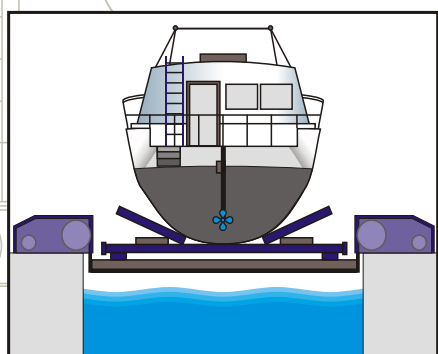
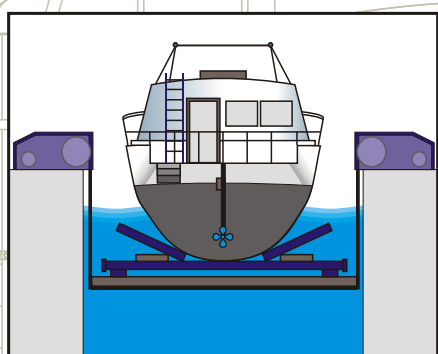
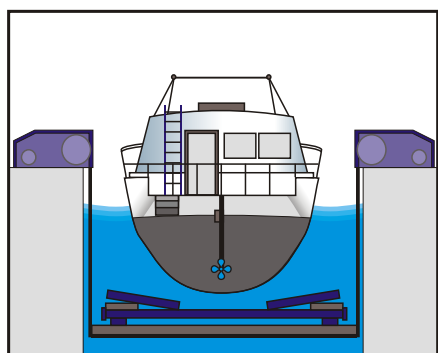


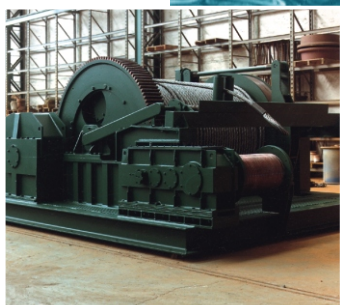
SYNCHRONISED PLATFORM ELEVATORS



At GH we have a special advice team which studies the particular needs of each client, offering them the solution best suited to their specified requirements, in practical and economic ways.

Using the experience accumulated by this team throughout the years, GH have developed the synchronised platform elevator, which are mainly applied for vessels superior to 400.





GH

INDUSTRIAS ELECTROMECANICAS GH, S.A.

APDO. 27 - Bº SALBATORE
20200 BEASAIN
(GIPUZKOA) SPAIN
TEL: (34) 943 160 625
FAX: (34) 943 161 480
E-MAIL: EXPORT@GHSA.COM
WWW.GHSA.COM